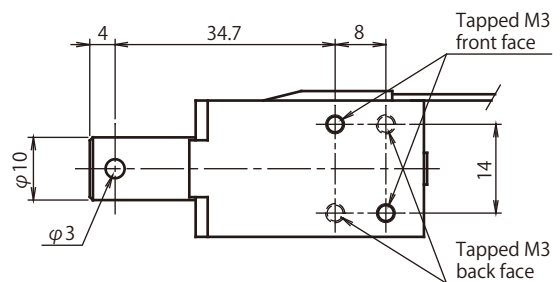
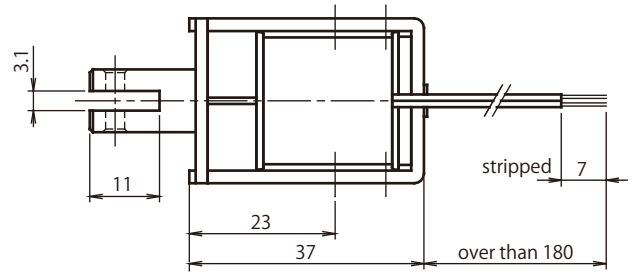
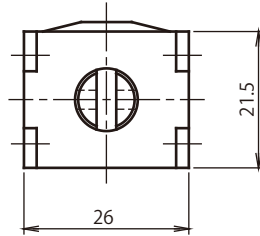
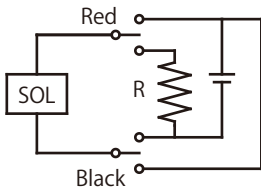


Pull : Red Wire (+) Black Wire (-)
 Release : Red Wire (-) Black Wire (+)



Adsorbed position

Duty Cycle

Insulation Class A 105°C(221°F)

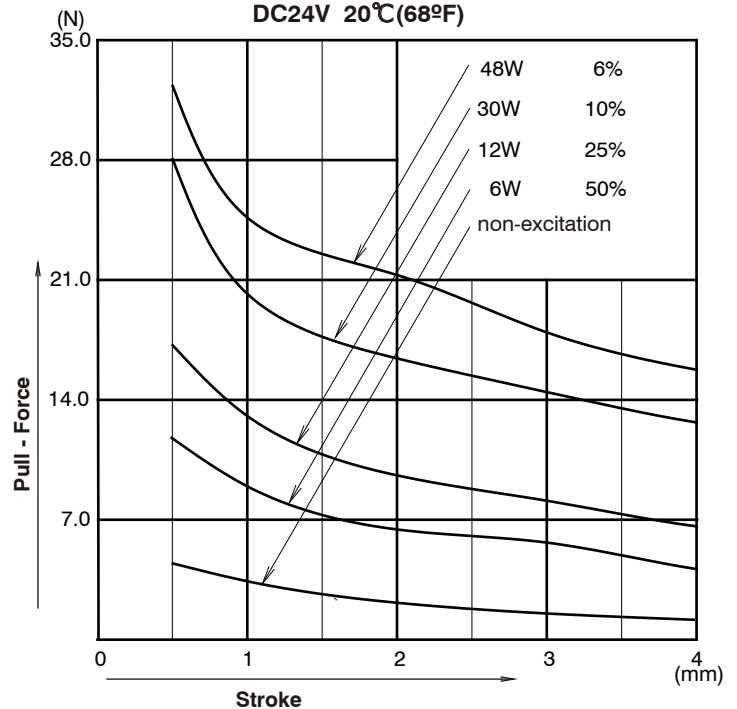
Part Number	Coil	Rated	Rated	Rated
	Resistance	DC6V	DC12V	DC24V
CD10370120	12 Ohms	100%	25%	6%
CD10370190	19 Ohms		40%	10%
CD10370480	48 Ohms	-	100%	25%
CD10370960	96 Ohms	-	-	50%

Holding force (N)

16.0

Graph Force - Stroke

DC24V 20°C(68°F)



Graph Release power consumption - load

