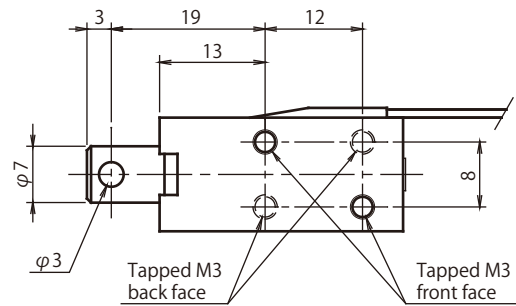
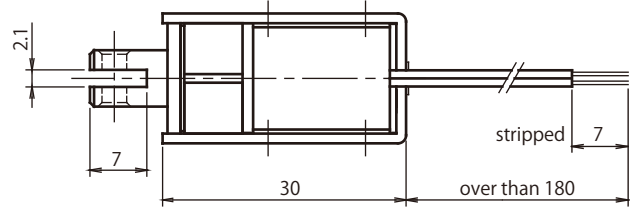
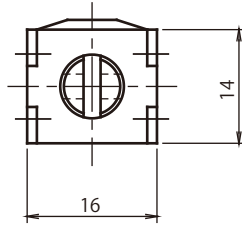
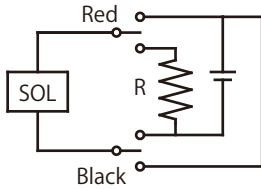


Pull : Red Wire (+) Black Wire (-)
 Release : Red Wire (-) Black Wire (+)



Adsorbed position

| |
|--------------------------|
| Holding force (N) |
| 6.0 |

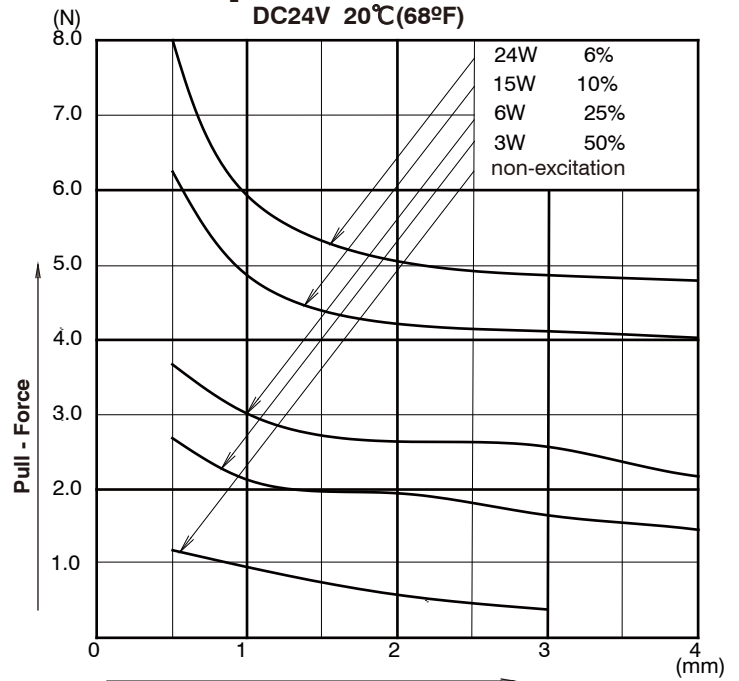
Duty Cycle

Insulation Class A 105°C(221°F)

| Part Number | Coil | Rated | Rated | Rated |
|-------------|------------|-------|-------|-------|
| | Resistance | DC6V | DC12V | DC24V |
| CD07300240 | 24 Ohms | 100% | 25% | 6% |
| CD07300380 | 38 Ohms | - | 40% | 10% |
| CD07300960 | 96 Ohms | - | 100% | 25% |
| CD07301920 | 192 Ohms | - | - | 50% |

Graph Force - Stroke

DC24V 20°C(68°F)



Graph Release power consumption - load

