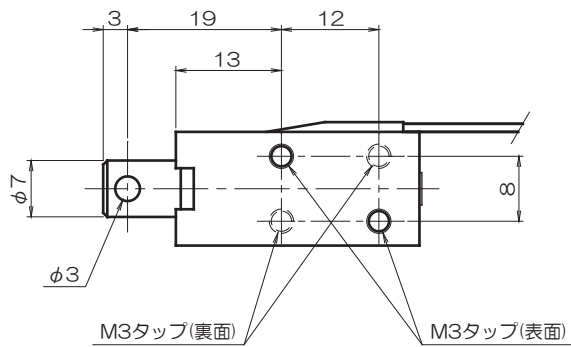
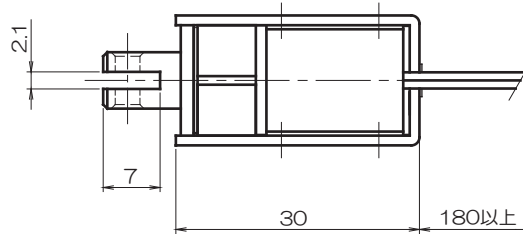
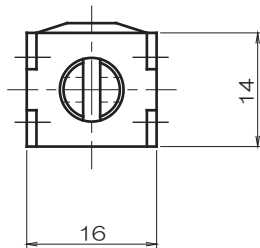
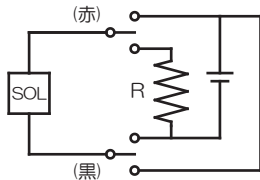


吸引時：赤線(+) 黒線(-)
 復帰時：赤線(-) 黒線(+)



使用定格表 下表は標準A種絶縁のもの

品番	抵抗値(Ω)	DC6V	DC12V	DC24V
CD07300240	24	連続通電	25%	6%
CD07300380	38	—	40%	10%
CD07300960	96	—	連続通電	25%
CD07301920	192	—	—	50%

吸着力(N)
6.0

